

Hauptform

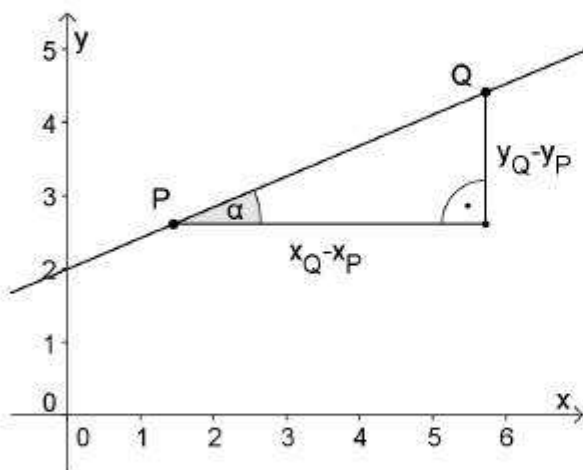
$$y = mx + c$$

Exponentialgleichungen

$$a^x = b \Leftrightarrow x = \log_a(b) \quad (a, b > 0)$$

Punktsteigungsform

$$y = m \cdot (x - x_Q) + y_Q$$



Steigung

$$m = \frac{y_Q - y_P}{x_Q - x_P}$$

